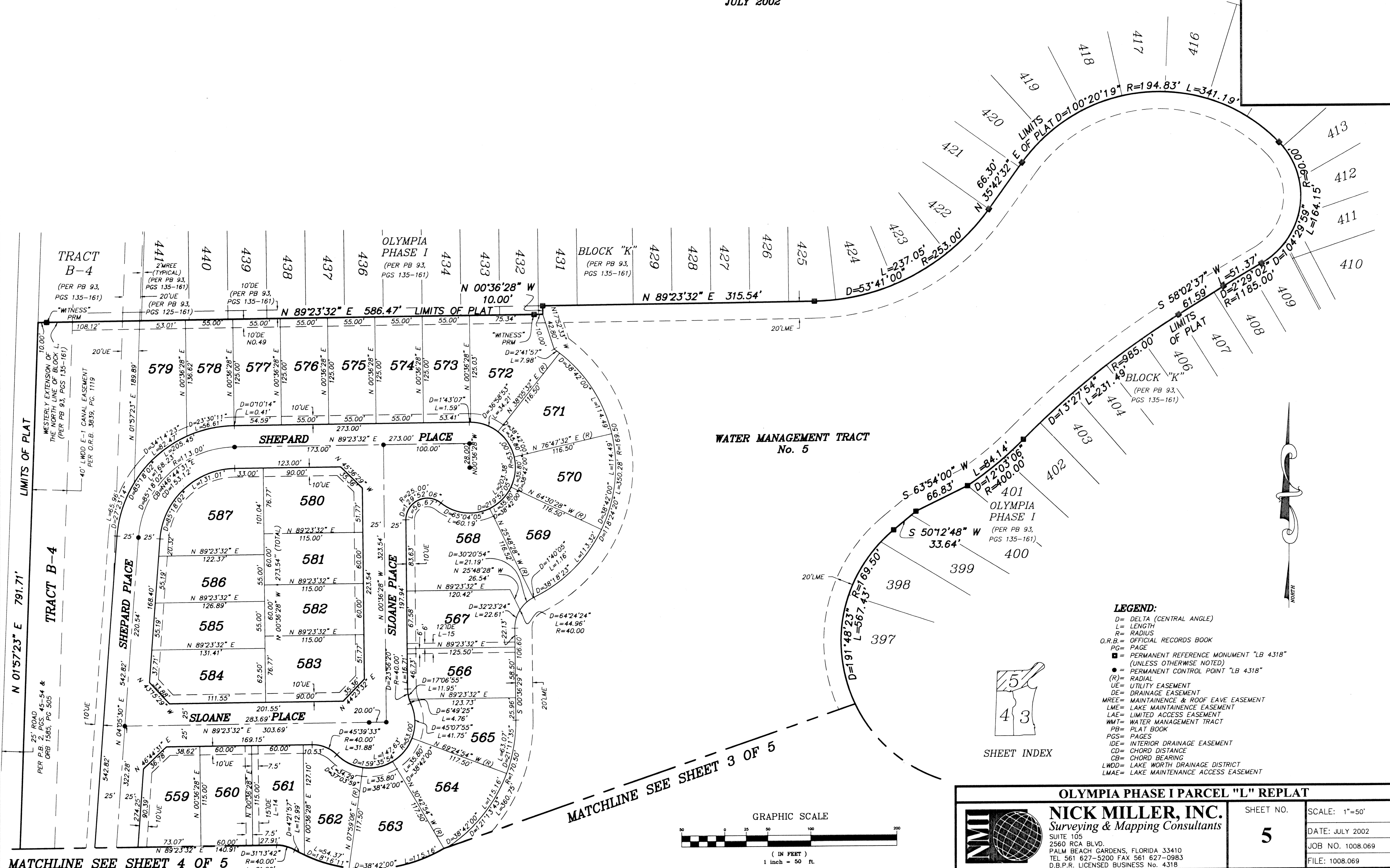
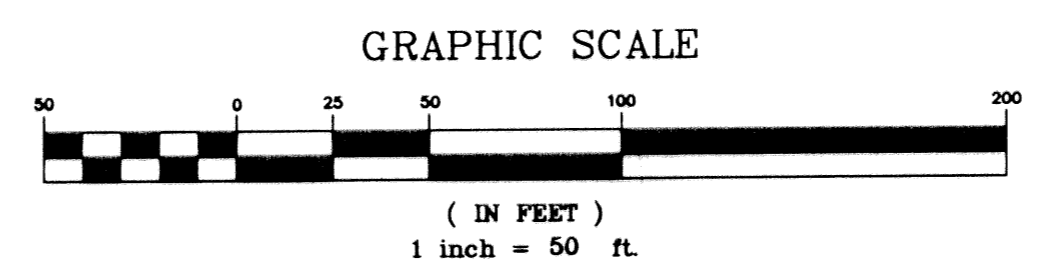
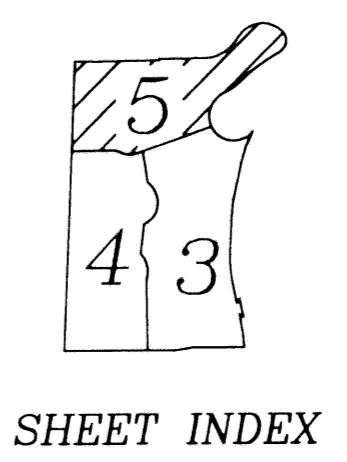


**OLYMPIA PHASE I PARCEL "L" REPLAT**  
 BEING A REPLAT OF BLOCK L, WATER MANAGEMENT TRACT No. 5, WABUTON TERRACE, SHEPARD PLACE, SIMONSON DRIVE, WOOLWORTH DRIVE AND A PORTION OF TRACT B-4, AS ALL ARE SHOWN ON OLYMPIA PLAT I, AS RECORDED IN PLAT BOOK 93, PAGES 135 THROUGH 161 OF THE PUBLIC RECORDS OF PALM BEACH COUNTY FLORIDA. IN SECTION 18, TOWNSHIP 44 SOUTH, RANGE 42 EAST, VILLAGE OF WELLINGTON, PALM BEACH COUNTY, FLORIDA  
 SHEET 5 OF 5  
 JULY 2002



**LEGEND:**  
 D= DELTA (CENTRAL ANGLE)  
 L= LENGTH  
 R= RADIUS  
 O.R.B.= OFFICIAL RECORDS BOOK  
 PG= PAGE  
 ■ = PERMANENT REFERENCE MONUMENT "LB 4318" (UNLESS OTHERWISE NOTED)  
 ● = PERMANENT CONTROL POINT "LB 4318"  
 (R)= RADIAL  
 UE= UTILITY EASEMENT  
 DE= DRAINAGE EASEMENT  
 MREE= MAINTENANCE & ROOF EAVE EASEMENT  
 LME= LAKE MAINTENANCE EASEMENT  
 LAE= LIMITED ACCESS EASEMENT  
 WMT= WATER MANAGEMENT TRACT  
 PB= PLAT BOOK  
 PGS= PAGES  
 IDE= INTERIOR DRAINAGE EASEMENT  
 CD= CHORD DISTANCE  
 CB= CHORD BEARING  
 LWD= LAKE WORTH DRAINAGE DISTRICT  
 LMAE= LAKE MAINTENANCE ACCESS EASEMENT



<b>OLYMPIA PHASE I PARCEL "L" REPLAT</b>	
	<b>NICK MILLER, INC.</b> Surveying & Mapping Consultants
SHEET NO. <b>5</b>	SCALE: 1"=50' DATE: JULY 2002 JOB NO. 1008.069 FILE: 1008.069
SUITE 105 2560 RCA BLVD. PALM BEACH GARDENS, FLORIDA 33410 TEL 561 627-5200 FAX 561 627-0983 D.B.P.R. LICENSED BUSINESS NO. 4318	

MATCHLINE SEE SHEET 4 OF 5

MATCHLINE SEE SHEET 3 OF 5